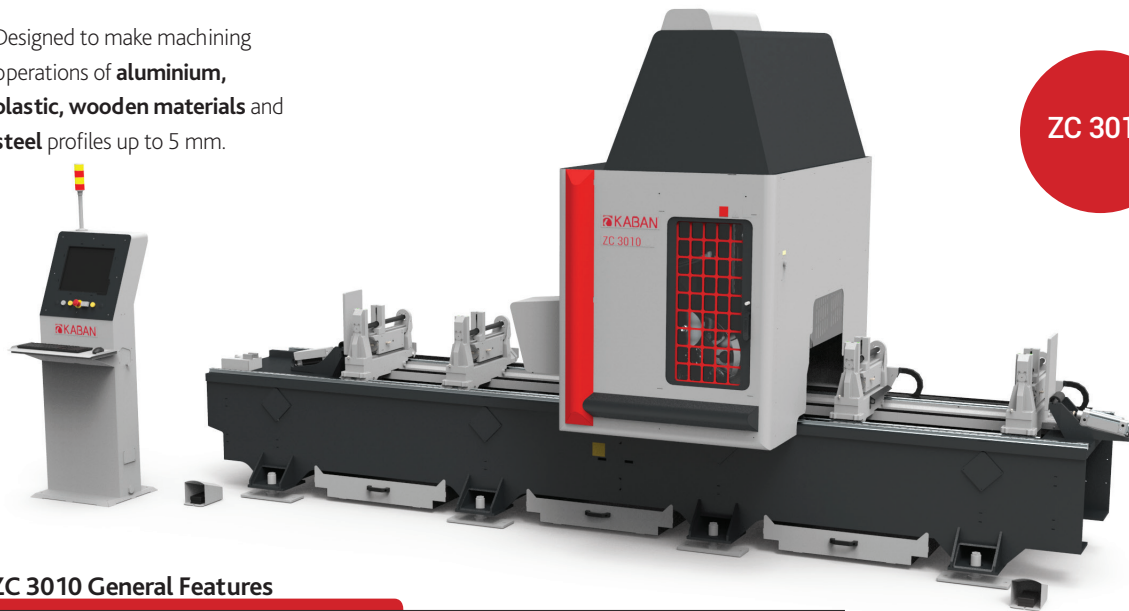


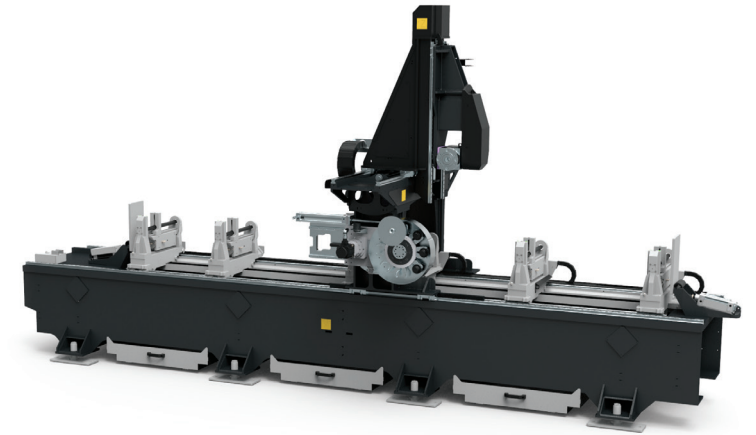
ZC 3010 / ZC 3020

4 Axis Aluminium Machining Center

Designed to make machining operations of **aluminium, plastic, wooden materials** and **steel** profiles up to 5 mm.

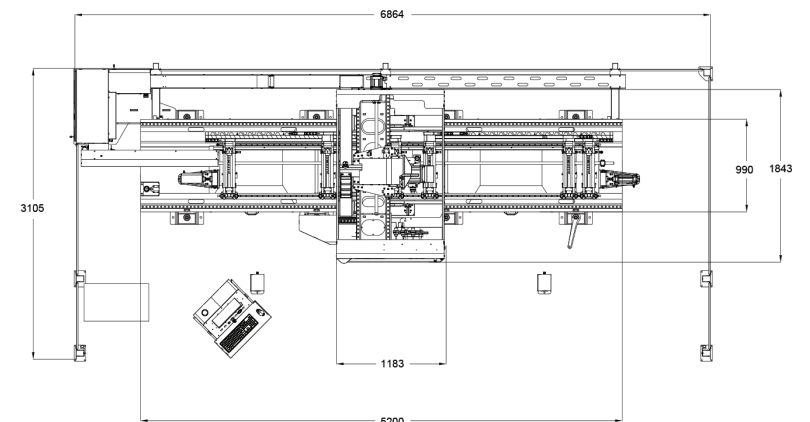


ZC 3010



ZC 3010 General Features

- Robust Mechanical Design for high speed and acceleration.
- It provides maximum performance as it is produced using high quality materials.
- Long-life moving parts with automatic lubrication system.
- The standard model has 3 chip buckets, 6 clamps and 8 tool holders.
- Mitsubishi CNC M720VW control unit, internal HDD, optical communication, high speed and precision, 0.001 mm command increment and ethernet interface.
- In case of power failure, the spindle is automatically recovered from the profile by means of a program. The machine computer is protected by UPS. In this way, the remaining program can be restarted from where it left off.
- It provides the opportunity to work in double zone with right and left stoppers.
- With the optional 90° tool, it can process the bottom surface of the profile.
- Profile length and width measurements can be made with the optional probe.
- The absence of any material that could be damaged in the areas where sawdust and wastes fall provides a long life.



H: 2750 mm
W: 7540 mm
L: 4150 mm



400 V
L1-L2-L3-N-PE
50 / 60 Hz
23.4 kW



5300 kg



6-8 Bar
450 l / min



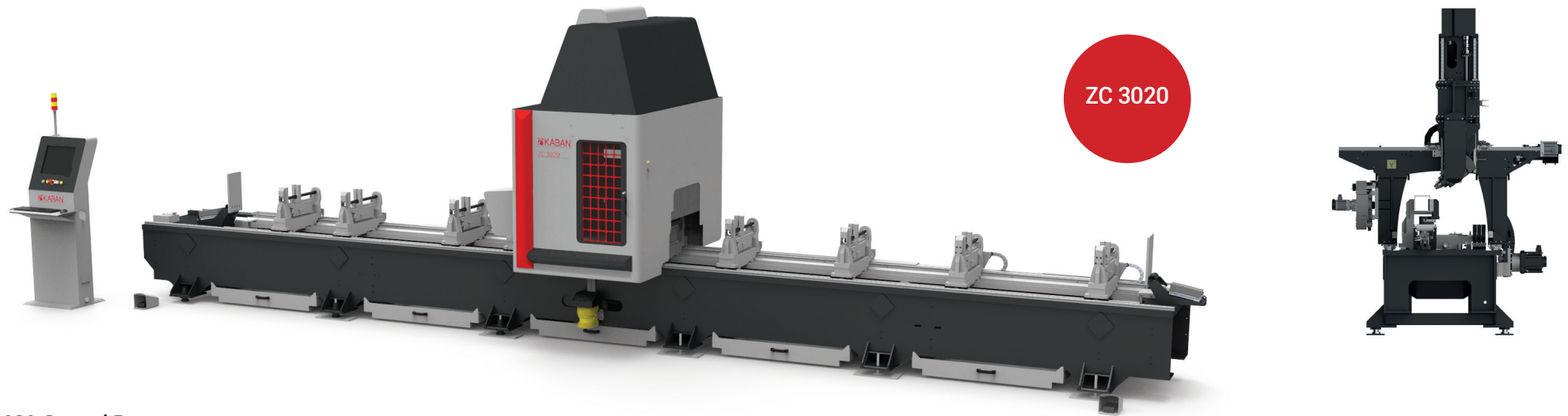
Ød: 200 mm



L max:
4100-8200 mm

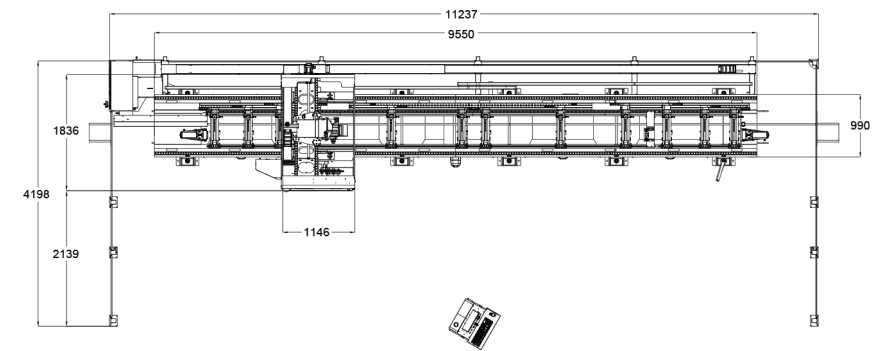


a max.: 400 mm
h max.: 300 mm



ZC 3020 General Features

- Robust Mechanical Design for high speed and acceleration.
- It provides maximum performance as it is produced using high quality materials.
- Long-life moving parts with automatic lubrication system.
- The standard model has 5 chip buckets, 10 clamps and 8 tool holders.
- Mitsubishi CNC M720VW control unit, internal HDD, optical communication, high speed and precision, 0.001 mm command increment and ethernet interface.
- In case of power failure, the spindle is automatically recovered from the profile by means of a program. The machine computer is protected by UPS. In this way, the remaining program can be restarted from where it left off.
- Thanks to the field scanner and right-left stoppers, it provides continuous operation.
- With the optional 90° tool, it can process the bottom surface of the profile.
- Profile length and width measurements can be made with the optional probe.
- The absence of any material that could be damaged in the areas where sawdust and wastes fall, provides a long life.



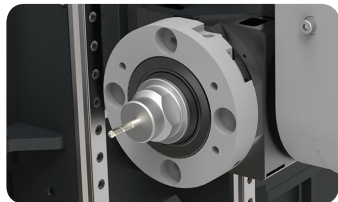
<p>H: 2750 mm W: 11900 mm L: 4150 mm</p>	<p>400 V L1-L2-L3-N-PE 50 / 60 Hz 23.4 kW</p>	<p>7950 kg</p>	<p>6-8 Bar 450 l / min</p>	<p>ØD Ød: 200 mm</p>	<p>L max: 8450-16000 mm</p>	<p>a h max.: 400 mm max.: 300 mm</p>
--	---	----------------	--------------------------------	--------------------------	---------------------------------	--

Control Panel



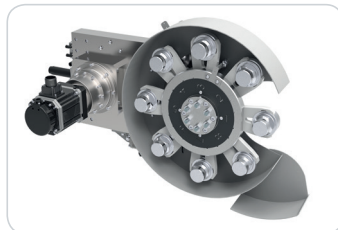
- Easy to use and flexible operating system and interface.
- Mitsubishi CNC control unit.
- Numerical processing with G-Code transferred from CAD-CAM software.
- It communicates with ORGADATA and programs that extract .ncx files.
- High performance machine management.
- Easy parameter settings.
- It has periodic maintenance reminder function.
- Service support with remote connection.
- Usb and Com Port input.

Spindle



- Torque-boosted servo control with spinea 0,01° gap positioning.
- HSD brand spindle which has thermostat sensor with liquid cooling 12 kW max. 24,000 rpm.
- Tool cooling system with oil-air mixture spraying, speed adjustment and liquid level sensor.
- HSK tool holder and tool holder cleaning system.
- Tool change security protocols written to reduce operator errors as much as possible.

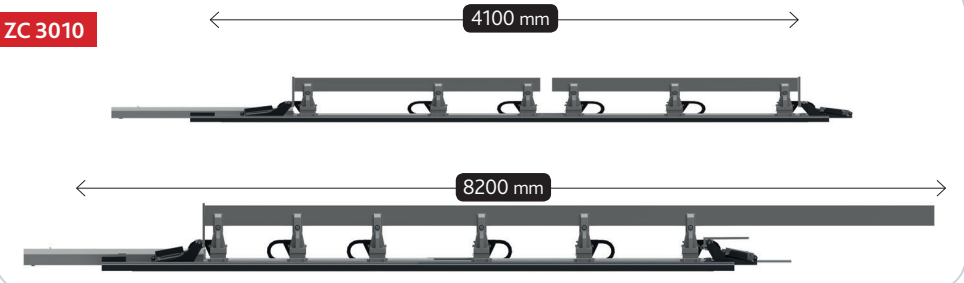
Magazine



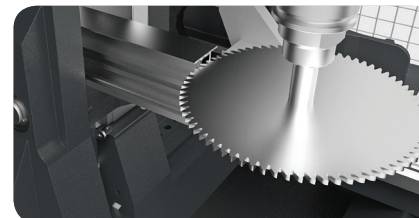
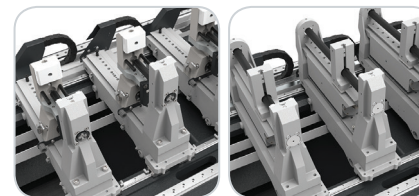
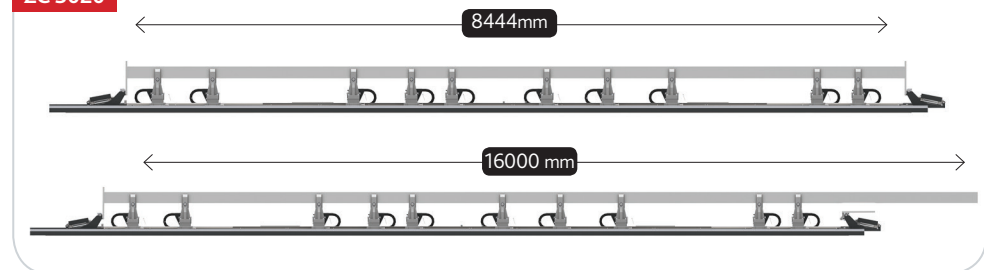
- 8 tool capacity magazine.
- Tool change feature in 8 seconds.
- Easy access from the front to change the tools from the magazine.
- It allows to save time by changing the tool when passing from one operation to another one on the piece.
- Ø200mm saw can be installed.

Clamps

ZC 3010



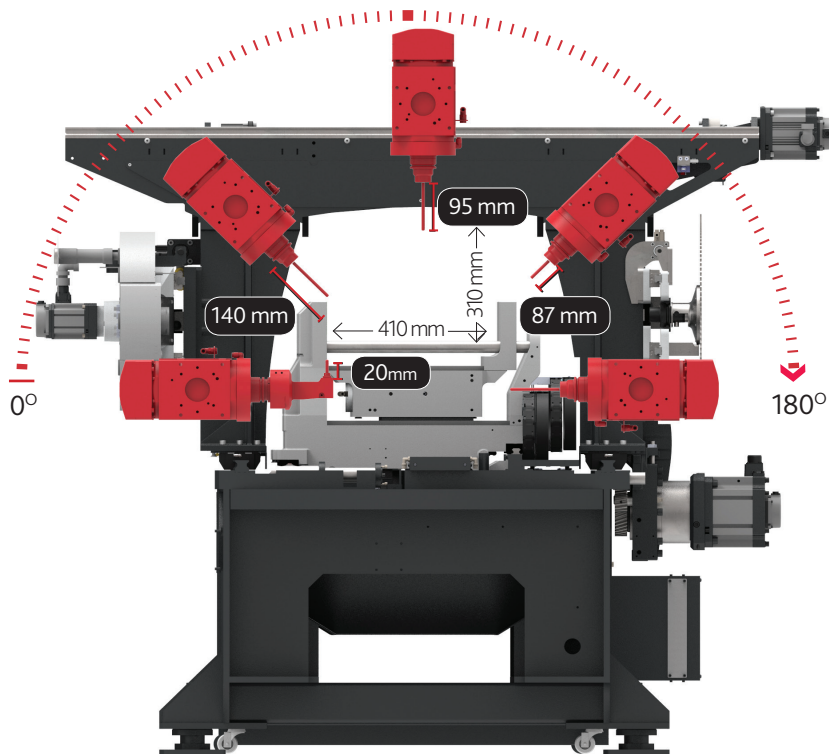
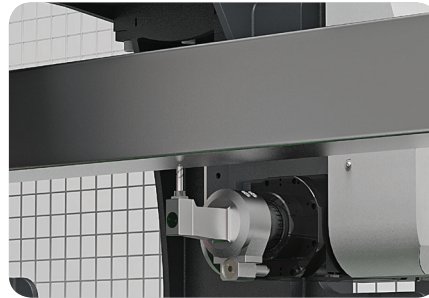
ZC 3020



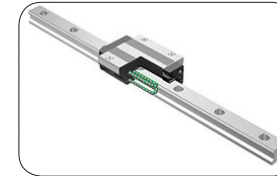
- Since the clamp constants are at the front, the profile loading process is very easy.
- The standard module has 6 clamps with 2 types.
- Roller system of the surfaces where the profile is placed provides the comfort of profile sliding.
- According to the receipts on the workpiece, the clamps receive servo-controlled automatic position.
- Easy piece referencing with double-sided profile support system.
- Long length profile processing is available. With Ø200 mm saw blade, it makes milling from the ends of the profiles.
- Thanks to the pressure regulator, the clamp tightness can be adjusted according to the profile thickness.

A Axis

- It processes profiles of aluminum, plastic and wood materials in width and height shown in the picture.
- The tool sizes according to the direction and the piece is shown in the picture below.
- 4 Axis simultaneous operation feature.



Bearing System



- High quality bearings suitable for high speeds whose gap class is zero.

Technical Features

	ZC 3010	ZC 3020
Axis		
Y Axis Servo Motor	1 x 1,5 kW	1 x 1,5 kW
X Axis Servo Motor	1 x 3,5 kW	1 x 3,5 kW
Z Axis Servo Motor	1 x 1 kW	1 x 1 kW
A Axis Servo Motor	1 x 0,75 kW	1 x 0,75 kW
X Axis Rapid Speed	144 m/min	144 m/min
Y Axis Rapid Speed	20 m/min	20 m/min
Z Axis Rapid Speed	20 m/min	20 m/min
A Axis Rapid Speed	360° / sec	360° / sec
X Axis Reductor Planet	SD140	SD140
Spindle Motor HSD ES779	1 x 12 kW max. 24000 d/d	1x 12 kW max. 24000 d/d
Clamp Positioning Motor		
Servo Motor	1 x 0,75 kW	1 x 0,75 kW
Magazine Motor		
Servo Motor	1 x 0,75 kW	1 x 0,75 kW
Machine Dimensions		
Height	2715 mm	2715 mm
Width	4260 mm	4260 mm
Length	7600 mm	18885 mm
Weight	5000 kg	7000 kg
Air		
Pressure	6-8 bar	6-8 bar
Consumption		
Screen		
	17"lcd	17"lcd
Communication		
	Ethernet	Ethernet
	USB	USB
Software		
Control	Mitsubishi CNC M720VW	Mitsubishi CNC M720VW
CAD / CAM	CamQuix	CamQuix
Electricity		
Voltage	400V (L-1L-2L-3N-PE) 60/50 Hz	400V (L-1L-2L-3N-PE) 60/50 Hz
Power	23 kW	23 kW